



Medium Chess Puzzle # 0119

By

G Bud Games
<https://gbud.in>

January 27, 2022

Contents

Medium Chess puzzle # 0119 - Mate in 3 moves	4
Medium chess puzzle 0119	4
Solution to medium chess puzzle 0119	5
Solution 1	5
Solution 2	8
Right moves for the solution to the medium chess puzzle 0119	12
Explanation for the moves	12
Categories of medium chess puzzle 0119	13
medium chess puzzle 0119 chart	14
How to view the solution to medium chess puzzle 0119	16
How to get help for moves in the medium chess puzzle 0119	17
Play chess for free	18

List of Figures

1	Solve this medium chess puzzle 0119. Mate in 3 moves @ https://gbud.in/gs32862	4
2	Solve this medium chess puzzle online with solution @ https://gbud.in/gs32862	4
3	Initial board position of medium chess puzzle 0119	5
4	Rf3	6
5	Qc7+	6
6	Qb7	7
7	Ra1+	7
8	Ra3	8
9	Rxa3#	8
10	Initial board position of medium chess puzzle 0119	9
11	Rf3	9
12	Qc7+	10
13	Ka8	10
14	Rd8+	11
15	Qc8	11
16	Rxc8#	12
17	medium chess puzzle 119 chart 1	14
18	medium chess puzzle 119 chart 2	15
19	medium chess puzzle 119 chart 3	15
20	medium chess puzzle 119 chart 4	16

21	Click the solution button to view solutions @ https://gbud.in/gs32862	16
22	Click the help button to get help on next move @ https://gbud.in/gs32862	17
23	Solve more medium puzzles @ https://gbud.in/chsmdpz	17
24	Solve other puzzles @ https://gbud.in/chsgppz	17
25	Play chess online for free. Solve puzzles and play with friends	18
26	Solve this puzzle online by scanning this QR code or go to the link below	19

Medium Chess puzzle # 0119 - Mate in 3 moves

Solve this medium chess puzzle and improve your chess games through improvement of your chess strategies and chess tactics.

Puzzle No : 0119

Difficulty level : medium

Description : Mate in 3 moves

Next Move : White

Player level : Intermediate

Short URL for puzzle : <https://gbud.in/gs32862>

Medium chess puzzle 0119

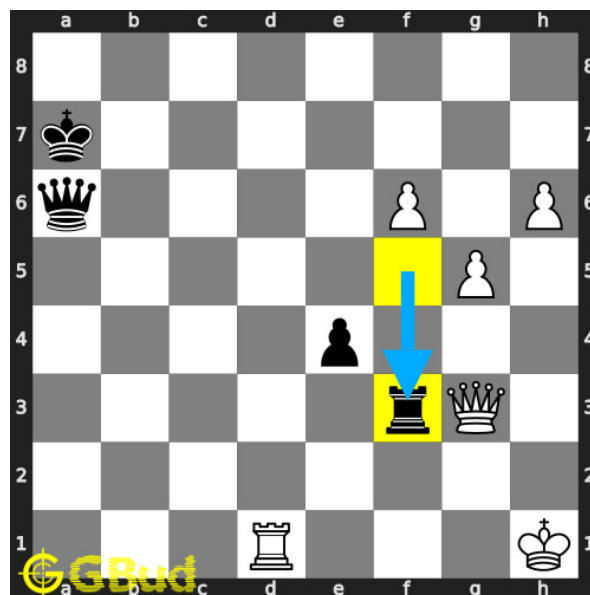


Figure 1: Solve this medium chess puzzle 0119. Mate in 3 moves @ <https://gbud.in/gs32862>



Figure 2: Solve this medium chess puzzle online with solution @ <https://gbud.in/gs32862>

Dont forget to check out [chess puzzles](#), [easy chess puzzles](#), [medium chess puzzles](#), [hard chess puzzles](#) and [chess puzzles collections](#) .

Solution to medium chess puzzle 0119

At this puzzle, next [move](#) is by [White](#). The objective of the puzzle is to mate in 3 moves.

See the interactive solution at the [puzzle page](#)

Solution 1

Initial board position This is the initial board position of medium chess puzzle 0119.

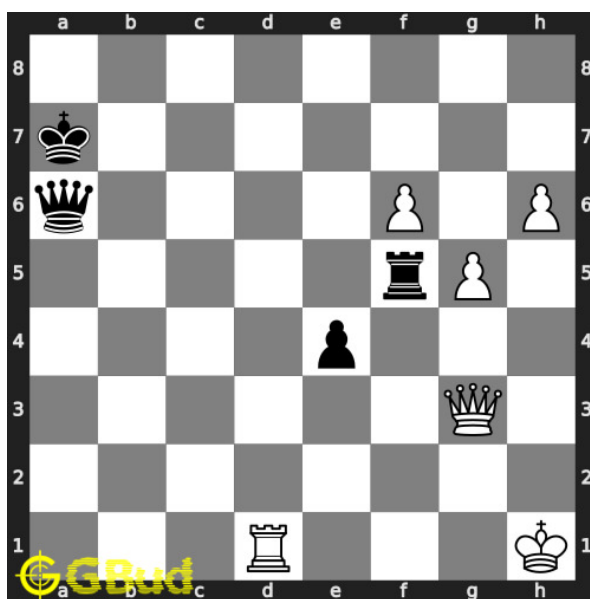


Figure 3: Initial board position of medium chess puzzle 0119

Move 1 Move by black

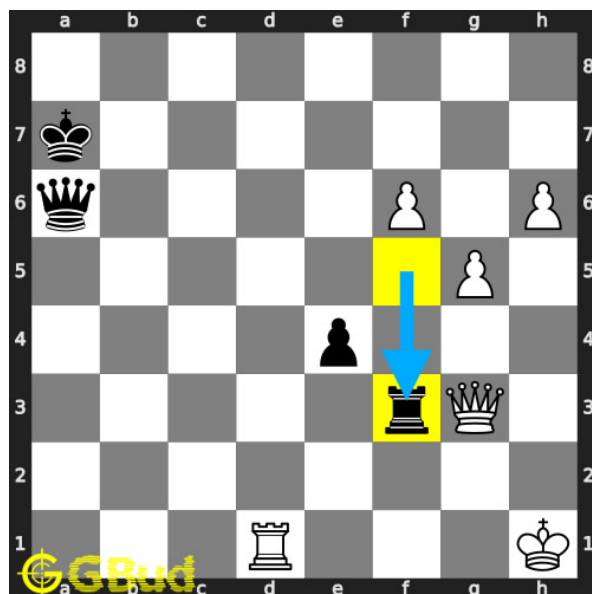


Figure 4: Rf3

opponent's **rook** threatens your **queen**.

Move 2 Move by white

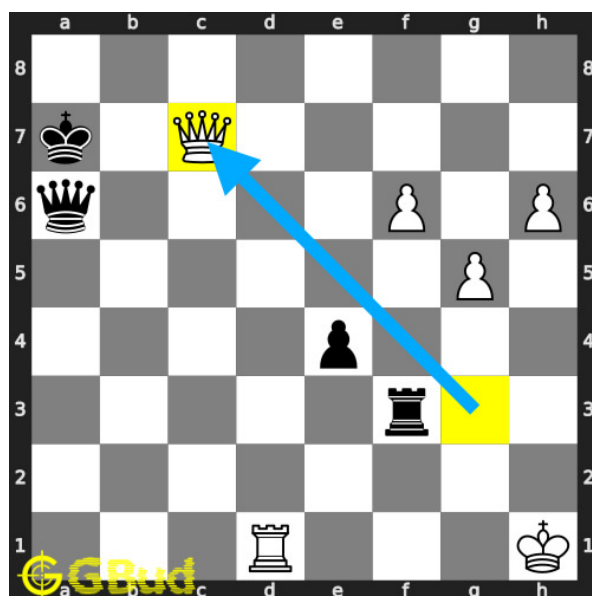


Figure 5: Qc7+

your **queen** moves to **c7** and gives **check** to opponent.

Move 3 Move by black

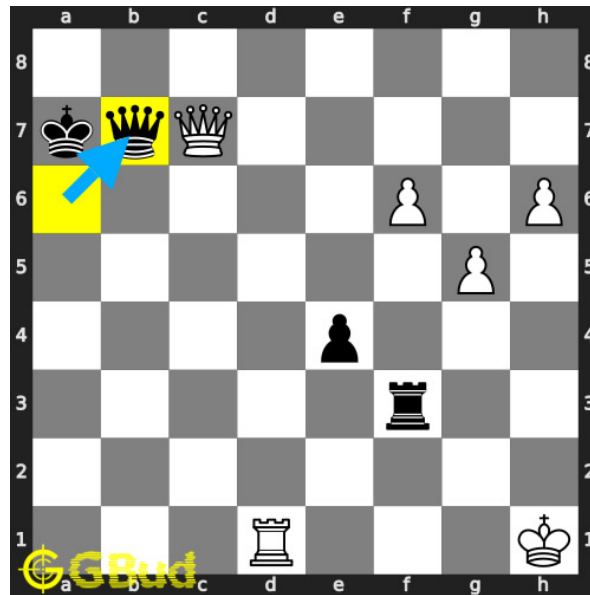


Figure 6: Qb7

opponent's **queen** blocks your **check**. it is **pinned** to their **king** now.

Move 4 Move by white

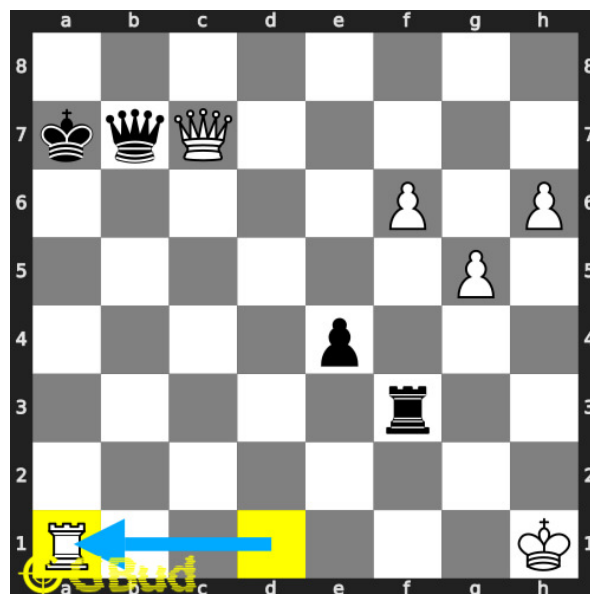


Figure 7: Ra1+

your **rook** moves to **a1** and gives **check** to opponent.

Move 5 Move by black

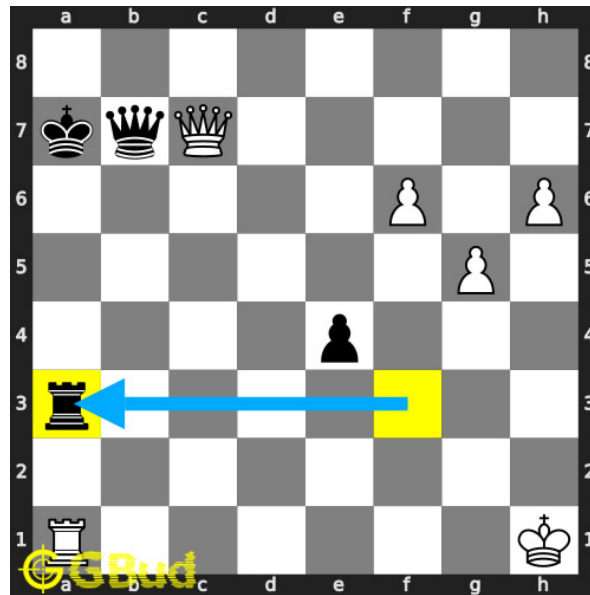


Figure 8: Ra3

opponent's rook blocks the check.

Move 6 Move by white

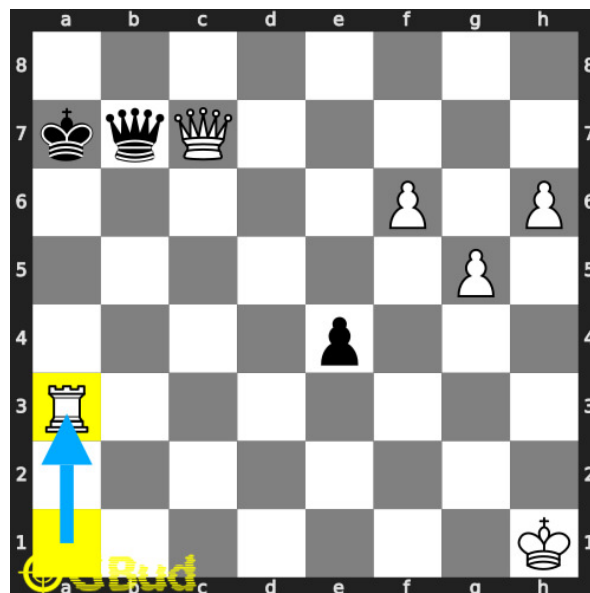


Figure 9: Rxa3#

your rook captures opponent's hanging rook and checkmate. this is how you can mate in 3 moves.

Solution 2

Initial board position This is the initial board position of medium chess puzzle 0119.

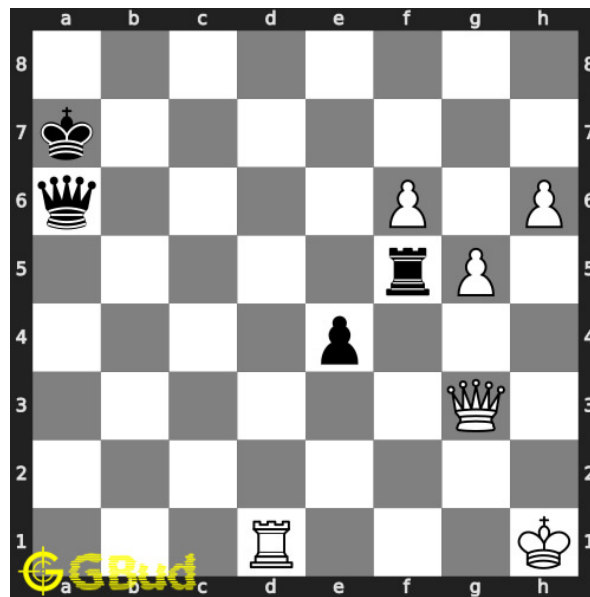


Figure 10: Initial board position of medium chess puzzle 0119

Move 1 Move by black

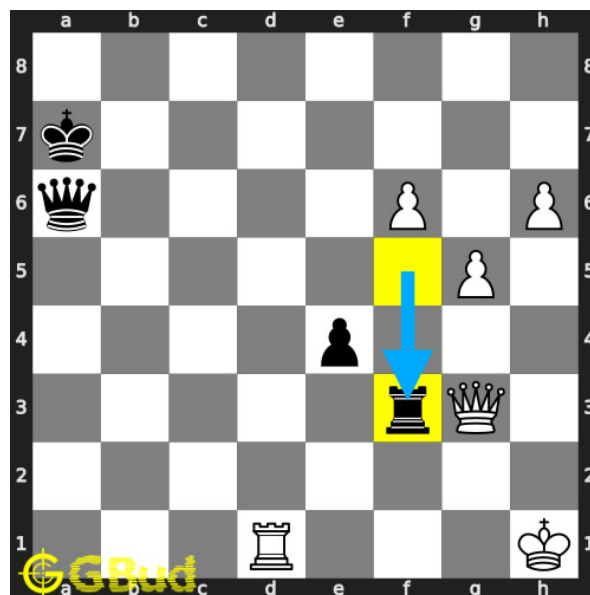


Figure 11: Rf3

opponent's **rook** threatens your **queen**.

Move 2 Move by white

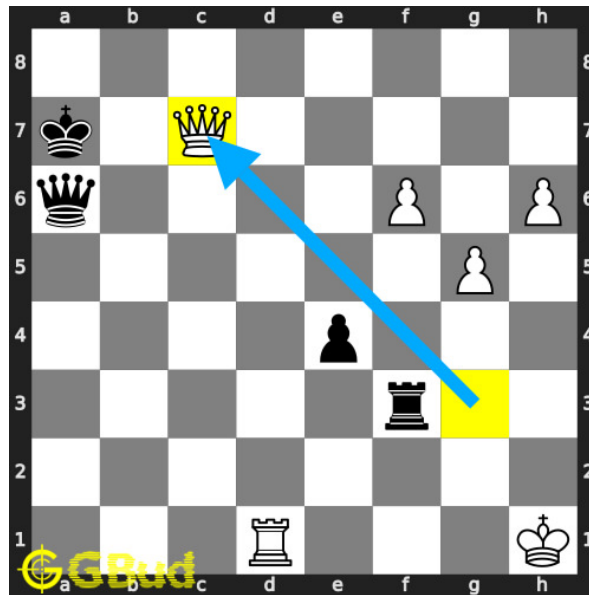


Figure 12: Qc7+

your [queen moves](#) to [c7](#) and gives [check](#) to opponent.

Move 3 Move by black

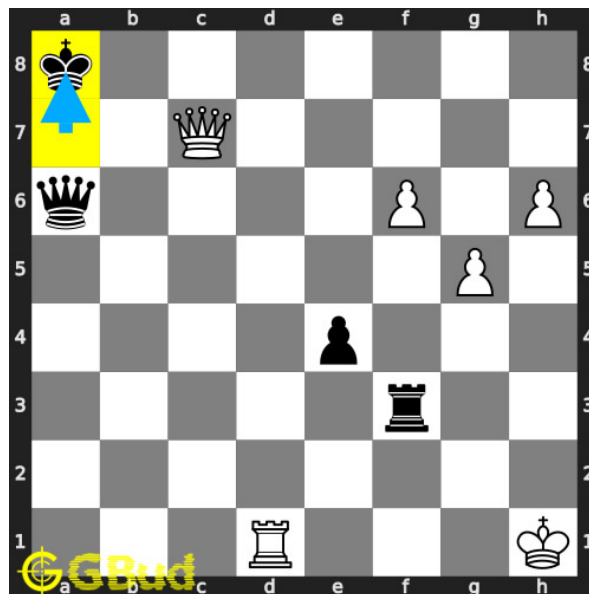


Figure 13: Ka8

opponent's [king move](#) to [a8](#) to escape from the [check](#) threat

Move 4 Move by white

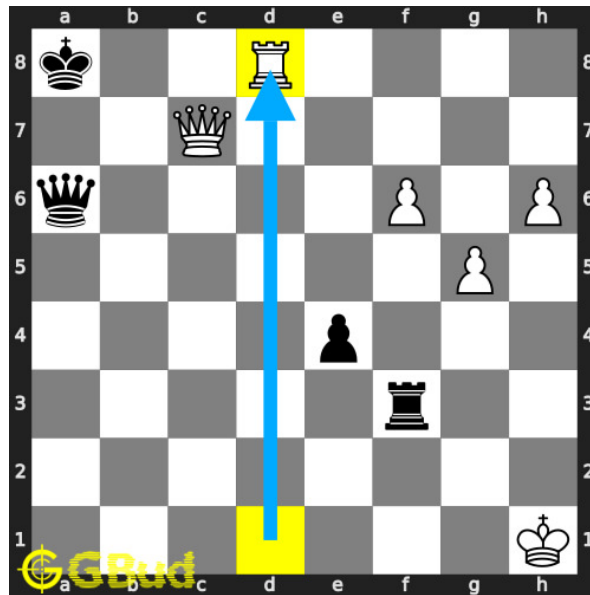


Figure 14: Rd8+

your **rook** moves to **d8** and gives **check**

Move 5 Move by black

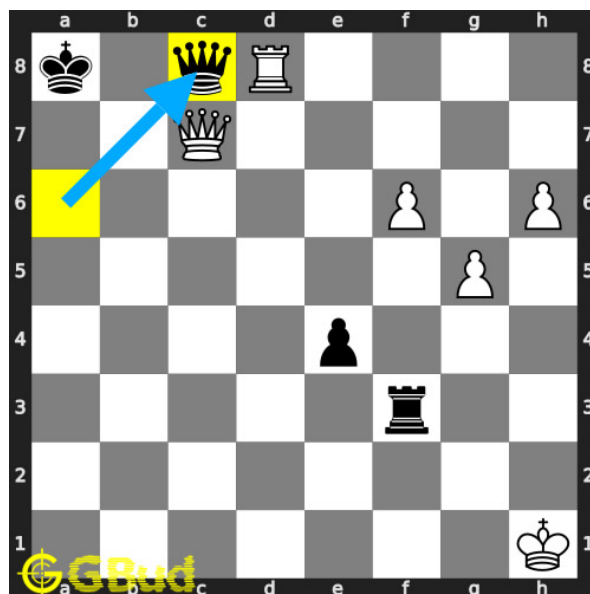


Figure 15: Qc8

opponent's **queen** blocks the **check**

Move 6 Move by white

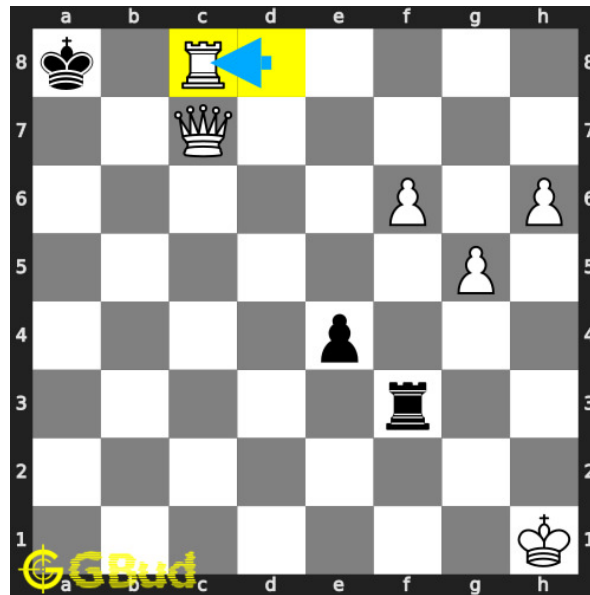


Figure 16: Rxc8#

your **rook captures** opponent's hanging **queen** and **checkmate**. this is called ladder **mate** or lawn mover **mate**. this is how you can **mate** in 3 **moves**.

Right moves for the solution to the medium chess puzzle 0119

Based on the objective of the puzzle, you have to make the right moves. Following are the right moves

1. Qc7+, Ra1+, Rxa3#
2. Qc7+, Rd8+, Rxc8#

Explanation for the moves

1. Rf3 - Opponent's rook threatens your queen.
2. Qc7+ - Your queen moves to c7 and gives check to opponent.
3. Qb7 - Opponent's queen blocks your check. It is pinned to their king now.
4. Ra1+ - Your rook moves to a1 and gives check to opponent.
5. Ra3 - Opponent's rook blocks the check.
6. Rxa3# - Your rook captures opponent's hanging rook and checkmate. This is how you can mate in 3 moves.
7. Rxc8# - Your rook captures opponent's hanging queen and checkmate. This is called ladder mate or lawn mover mate. This is how you can mate in 3 moves.
8. Ka8 - Opponent's king move to a8 to escape from the check threat

9. Qc8 - Opponent's queen blocks the check
10. Rd8+ - Your rook moves to d8 and gives check
11. For right move - Good Job. You have successfully had a checkmate in 3 moves.
12. For wrong move - You missed the chance to have a checkmate in 3 moves. Try again

Categories of medium chess puzzle 0119

This medium chess puzzle falls in these categories.

1. [Medium chess puzzles](#)
2. [Mate in 3 puzzles in chess](#)
3. [Endgame puzzles in chess](#)
4. [Strategy puzzles in chess](#)
5. [Mate pattern puzzles in chess](#)
6. [Pin puzzles in chess](#)
7. [Rook puzzles in chess](#)
8. [Queen puzzles in chess](#)

medium chess puzzle 0119 chart



Figure 17: medium chess puzzle 119 chart 1



Figure 18: medium chess puzzle 119 chart 2



Figure 19: medium chess puzzle 119 chart 3

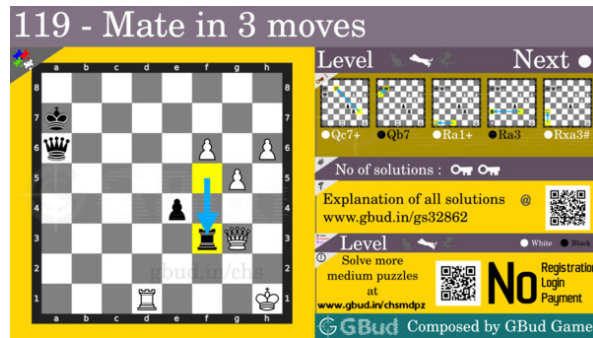


Figure 20: medium chess puzzle 119 chart 4

How to view the solution to medium chess puzzle 0119

To view the [solution to this puzzle](#), follow the steps given below

1. Go to the [puzzle page](#)
2. Click the solution button (Key as shown [below](#)) to view the solution



Figure 21: Click the solution button to view solutions @ <https://gbud.in/gs32862>

How to get help for moves in the medium chess puzzle 0119

To get help or the possible next moves in the puzzle, , follow the steps given below

1. Go to the [puzzle page](#)
2. Click the help button (exclamation mark as shown [below](#)) to get help or suggestion on next possible [move](#)



Figure 22: Click the help button to get help on next move @ <https://gbud.in/gs32862>



Figure 23: Solve more medium puzzles @ <https://gbud.in/chsmdpz>



Figure 24: Solve other puzzles @ <https://gbud.in/chsgppz>

Play chess for free

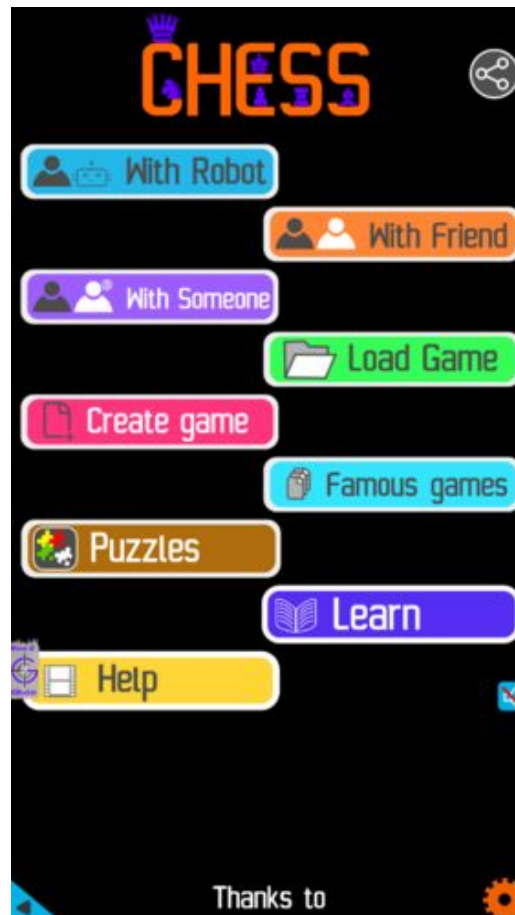


Figure 25: Play chess online for free. Solve puzzles and play with friends

Play chess for free at <https://gbud.in/chs>

We present you a platform to play chess online with friends for free. No need to install any app. You can play chess for free without registration or login.

Simple. You can do several chess related activities.

1. [solve chess puzzles](#)
2. [learn about chess](#)
3. [play chess with computer](#)
4. [play chess with friend](#)
5. [create your own chess games](#)

6. [fen viewer](#)
7. [fen editor](#)
8. [fen generator](#)
9. [pgn viewer](#)
10. [chess board editor](#)
11. [view famous chess games.](#)



Figure 26: Solve this puzzle online by scanning this QR code or go to the link below

<https://gbud.in/gs32862>

Read the latest article on Medium Chess puzzle # 0119 - Mate in 3 moves by scanning this QR code or click the link

Previous article : [« Medium Chess puzzle # 0118 - Gain opponent's queen in 2 moves](#)

Next article : [Medium chess puzzles »](#)

[Back to top](#)

[Contact Us](#)